

run II

run II



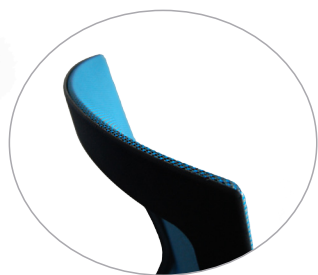
High Back



Mid Back



High Back

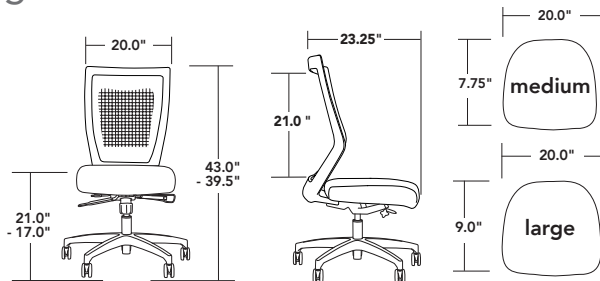


TASK | CONFERENCE | GUEST | STOOL

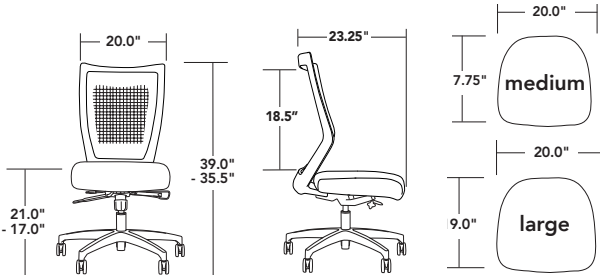
- sophisticated, elegant mesh back
- available in high back and mid back
- offers two seat sizes
- syncro control with side tension adjustment
- four way stretch mesh back
- multiple options available

via
SEATING

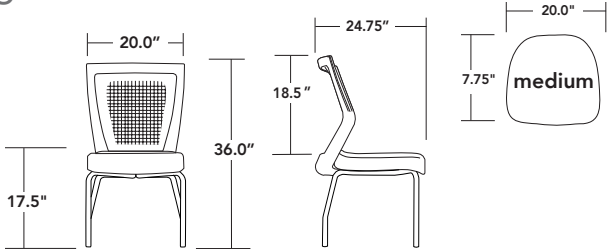
high back - 981/982



mid back - 971/972



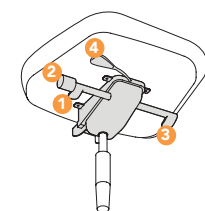
guest - 921



mesh colors



controls

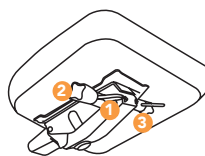


-61C/62C
syncro control
with Side
tension
adjustment

use for: task | conference seating

1. seat height adjustment
2. back/recline tension adjustment
3. tilt lock
4. seat slider on 62C (range 2.5")

note: seat and back move at 2:1 ratio
weight capacity: 300 lbs



-64CS
syncro control
with
tilt limit &
stool kit

use for: task | conference seating

1. seat height adjustment
2. back recline tension adjustment
3. tilt lock

note: seat and back move at 2:1 ratio
weight capacity: 300 lbs

arms



-31A
fixed conference
loop arm



-38A
adjustable height
arm



-39A
adjustable height,
rollback arm



-51A/52A/53A
black, white or
polished adjustable
height arm

bases



addition options (full list available in price book)

SUFFIX	DESCRIPTION
-6	standard cap: 38A, 39A
-18S	standard cap: 51A, 52A, 53A
-17AB	width adjustment bracket: 38A, 51A, 52A, 53A
-21TB133T	TB133 fire rated products
-LR2	adjustable lumbar support
-16HP	standard black carpet caster
-16SCG	gray hard floor caster
-16GL	black glides
-11DR	tall stool kit (only on 64CS)
-11XDR	extra tall stool kit (only on 64CS)

run II

Our Run II series is an upgrade from the original Run, offering a sophisticated, elegant back frame. This new back design offers a smooth line and stronger application for the 4 way stretch mesh. This delivers optimal support. Available as a midback or highback with a medium or large seat (guest chair option also available).



high back



high back



mid back with stool kit

smooth lines. modern design. run II.