

MAYLINE®

Seating
Overview





Today's office workers spend a great deal of time sitting and we understand the importance of having an office chair that supports variable postures.

Mayline® offers a variety of seating lines that are remarkably comfortable and exceptionally stylish, designed to boost individual comfort and productivity across a broad spectrum of settings, tasks and body types.

From the training room to the boardroom, from reception to the executive suite, from the lab to the cafeteria, our seating options will delight with long-lasting value and versatility. Every chair is backed by our limited lifetime warranty and most are available to ship within 72 hours.

Note: All seating is 250 lb. maximum weight rated and meets ANSI/BIFMA testing unless otherwise noted.

SEATING SELECTIONS:

Valoré® Pages, 4-5	Thesis™ Pages, 6-7	Gist™ Series Page 8	Commute™ Series Page 9	Ultimo™ Series Pages, 10-11	Mercado™ Series Pages, 12-13	Comfort Series Pages, 14-15	Mercado™ Wood Series Page 16	Cosy Social Chair Page 17
Valoré® Bistro Page 18	Escalate Series Page 19	Stools Page 20	Prestige Series Page 21	Santa Cruz Series Pages, 22-23	e5™ Banca Bench Pages, 24-25	Event Series Page 26	Momentum® Chart Page 27	

MAKE BETTER SENSE OF SEATING.



Thesis™ Training Chair w/static back and Expo Latte fabric with Flip-N-Go® Tables in Antique Topaz laminate with Black edge and Silver base.

VALORÉ® SERIES

Versatile value.

Lightweight, flexible, and comfortable, Valoré® shines in training rooms, offices, collaborative areas and even hospitality settings. Chairs stack and nest for easy mobility and convenient storage. Comfortable mesh back and fabric seat, along with a gentle recline action makes Valoré as indispensable as it is stylish. 250 lb. weight rating.



TSH1
■ Integrated Arms

HIGH-BACK CHAIR

- Black fabric seat.
- Comfortable recline action.
- Chrome frame.
- Optional chair glides.



TSH2
■ No Arms



Black Fabric



Black Mesh



Orange Mesh



Red Mesh



Silver Mesh



TSM2 MID-BACK CHAIR

- Black fabric seat.
- Integrated arms.
- Brushed Silver frame.
- Optional chair glides.



Black Fabric



Black Mesh



Orange Mesh



Burgundy Mesh

VALORÉ® SERIES



TSH1F
■ Integrated Arms

UPHOLSTERED HIGH-BACK CHAIR

- Black mesh back.
- Upholstered seat.
- Comfortable recline action.
- Black, Chrome or Silver frame.
- Optional chair glides.



TSH2F
■ No Arms



Black Mesh

150+
Momentum®
fabric options.

See page 27

TSH3 HEIGHT ADJUSTABLE TASK CHAIR

- Black fabric seat.
- Integrated arms.
- Basic height adjustability.
- 5-star, 27" aluminum base.



Black Fabric



Black Mesh



Orange Mesh



Red Mesh



Silver Mesh

THESIS™ TRAINING SERIES

Masters at responsiveness.

Bringing together a brilliant design, a range of accommodating options and space saving flexibility, Thesis™ is a logical solution for today's dynamic training environments. From sessions and seminars, to meetings and training, it outperforms with comfort, style and efficiency.

STATIC BACK CHAIR

- Light Gray poly backrest for contoured support.
- Black fabric seat.
- Gray frame.
- Gray all-purpose soft casters.



KTS2
■ No Arms



KTS1
■ Flip Arms



KTS3
■ Tablet arm with flip feature



Black Fabric

THESIS™ TRAINING SERIES

FLEX BACK CHAIR

- Black flexible poly backrest for seated comfort.
- Contoured lumbar support and gentle recline action.
- Gray frame.
- Gray/Black all purpose casters.



UPHOLSTERED CHAIR

- Same features as the Static Back and Flex Back but with an upholstered seat.



150+
Momentum®
fabric options.

See page 27

GIST™ SERIES

True essence of workability.

A contemporary seating line with a host of standard features such as adjustable lumbar support. With style and value, Gist™ offers the perfect combination of form and function with three versions to choose from.

MULTI-PURPOSE

- Silver/Black mesh back.
- Height adjustable, swivel tilt mechanism, tilt tension and tilt lock.
- Black fabric seat.
- Black base, cylinder and casters.
- Fixed T-arms and back support.



TASK & TASK PLUS+

- Synchro tilt mechanism, height adjustable, seat slider, tilt tension and tilt lock. Silver/Black Mesh back, Black fabric seat.

Task:

- Black base, cylinder and casters.
- Height adjustable T-arms and back support.

Task Plus+:

- Polished aluminum base, Black cylinder and casters.
- Height and width adjustable T-arms and back support.



Black Fabric



Silver Mesh

UPHOLSTERED MULTI-PURPOSE

- Same features as the Multi-Purpose but with upholstered seat.
- Silver/Black or Black mesh back.



UPHOLSTERED TASK & TASK PLUS+

- Same features as the Task and Task Plus+ but with upholstered seat.
- Silver/Black or Black mesh back.



150+
Momentum®
fabric options.

See page 27



Black Mesh



Silver Mesh

A distinctive silhouette.

Commute™ offers easy intuitive finger tip adjustment of height, tilt, recline and seat slide (standard on Task and Executive). Commute simply fits every body and it's unique profile comfortably adapts to any environment.



TASK CHAIR

- Synchro-tilt seat mechanism.
- Seat slider, tilt tension, tilt lock.
- Black or Chrome base.
- Upholstered seat.
- Black mesh back.
- Class 4 chair cylinder.
- Adjustable T-Arms or No-Arms.



MULTI-PURPOSE CHAIR

- Swivel-tilt mechanism.
- Black nylon base.
- Black mesh back only.
- Class 4 chair cylinder.
- Fixed loop arms or no-arms

150+
Momentum®
fabric options.

See page 27



Black Mesh



ULTIMO™ SERIES

High-end comfort, low-down price.

Ultimo™ Series is a family of luxurious, ultra-comfortable seating for executive, conference and task settings. Crafted with soft, supple top-grain leather, generous-sized deep cushions, detailed stitching and full-featured adjustments, it's the ultimate office chair that commands respect.



SERIES 100

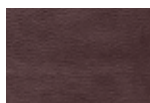
- Top-grain leather on all seated surfaces.
- Molded foam helps retain cushion shape.
- Deluxe knee-tilt mechanism with tilt-lock for easy reclining.
- Pneumatic seat height adjustment.
- Gunmetal Gray frame.

ULEX - HIGH-BACK

- Generously sized, sculpted deep cushions.
- Padded leather cantilevered armrests.



Black Leather



Burgundy Leather



ULMGR - MID-BACK

- Sculpted deep cushions.
- Padded leather loop armrests.



Black Leather

ULTIMO™ SERIES



UL230M-SERIES 200 MID-BACK

- Top-grain leather on all seated surfaces.
- Molded foam helps retain seat cushion shape.
- Deluxe knee-tilt mechanism with tilt-lock for easy reclining.
- Pneumatic seat height adjustment.



Black Leather



Double-stitched seams add strength.



Perforated leather cushions for breathability.



Padded leather loop armrests relieve forearm stress.

SERIES 300

- Top-grain leather on all seated surfaces.
- Molded foam helps retain seat cushion shape.
- Pneumatic seat height adjustment.



Black Leather



UL350H HIGH-BACK

- Thick padded contoured leather seat and back.
- Pronounced lumbar support.
- Padded leather loop armrests.
- Deluxe knee-tilt mechanism with tilt-lock for easy reclining.

UL330M MID-BACK

- Same features as UL350H, except: Adjustable height and width. Padded leather armrests. 2-to-1 synchro-tilt control (for every two degrees the back reclines, the seat reclines one degree).

UL550HEZ SERIES 500 HIGH-BACK

- Assembles in minutes.
- Ultra-soft, perforated leather cushions.
- Padded leather loop armrests.
- Deluxe knee-tilt control.
- Pneumatic seat height adjustment.
- Accentuated with gathered seams on seat & back.
- Durable steel frame construction.

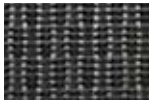


Black Leather

MERCADO™ SERIES



Black Fabric



Black Mesh



Silver/Black Mesh



3200X CHAIR

- Black fabric seat
- Black or Silver mesh back.
- Synchro-tilt.
- Adjustable lumbar support and arms.
- Tilt tension.
- Pneumatic seat height adjustment.
- Height/width-adjustable T-arms.

Sophistication and savings.

Mercado™ combines contemporary style with old-fashioned comfort to polish your image – at a surprisingly affordable price. Perfect for office and conference rooms.

- Leather on most seated surfaces.
- Padded leather armrests on most models.
- Deluxe knee-tilt control on most models.
- Pneumatic seat height adjustment.



PR - PRESIDENT CHAIR

- Deep pillow-style cushions.
- 5-star Cast-Aluminum base with Chrome finish.
- Cast-aluminum armrests with leather padding.



2522 CHAIR

- Black leather and mesh fabric.
- Chrome 5-star base.
- Adjustable Arms.



Black Leather

MERCADO™ SERIES



AL - ALLIANCE CHAIR

- Black nylon armrests.
- Cast-Aluminum 5-star base with Chrome finish.
- Center tilt control.



2528 CHAIR

- Black leather fabric.
- Adjustable arms.



2547 CHAIR

- Black leather on seated surfaces.
- Sturdy loop arms.



Black Leather

The warmth of wood.

Mercado's sleek, modern profile becomes softer and warmer with the addition of a few well-chosen wood enhancements, in finishes that match most Mayline casegood lines.



Black Leather

Wood Base/Armrests:



Sierra Cherry



Mahogany

CS - CORSICA CHAIR

- Deep cushioned seat and back.
- Genuine Black leather on all seated surfaces.
- Deluxe knee-tilt control.
- Swivel seat with pneumatic height adjustment.
- Tilt tension and tilt lock.
- Solid wood 5-star base.
- Solid wood armrests with Black leather padding.

COMFORT SERIES

Enhanced support.

Get the support your body needs with our Comfort Series line - offering reinforced frames and heavy-duty components. From padded executive chairs to durable office chairs, along with adjustable seat, back and arm options, make it easy to meet your needs.

BIG & TALL EXECUTIVE CHAIRS

- An easy to turn knob adjusts resistance to the lumbar area to enable customized support for the lower back.
- Swivel seat with pneumatic height adjustment.
- Oversized Cast-Aluminum, 5-star base with dual hooded casters.
- Steel reinforced seat plate.
- Heavy-duty, high-density foam cushions.
- Available in Gray or Black fabric or Black leather.
- Supports up to 500 lbs.



Black Leather



Black Fabric



Gray Fabric



1801AGL Leather Chair
■ Loop Arms



1801AGL Fabric Chair
■ Loop Arms



6446AG Fabric Chair
■ Pivot Arms



6446AG Leather Chair
■ Pivot Arms

24-HOUR HIGH PERFORMANCE CHAIR

- Independent adjustment of seat and back angle.
- Chair seat tilts forward and rearward with tilt tension adjustment.
- Seat cushion features memory foam.
- Sculpted, height-adjustable back.
- Available in Gray or Black fabric and Black leather.
- 300 lb. maximum weight rated.
- Optional height-adjustable arms.



Black Leather



Black Fabric



Gray Fabric



2424AGL Leather Chair with 12ADJARM
■ Leather chair shown with optional arms



2424AG Fabric Chair
■ Fabric chair shown without optional arms

EXECUTIVE HIGH BACK CHAIR

- Tilt, tilt tension and tilt lock controls.
- High back with waterfall seat design.
- One-piece seat frame construction.
- Available in Gray or Black fabric, or Black leather.
- T-shaped arms are height adjustable and have comfortable impact resistant urethane armrests.
- Coccyx cutout suspends tailbone to reduce pressure on the spine.
- Does not ship via small parcel.



Black Leather



Black Fabric



Gray Fabric



Coccyx Cutout



9413AGL
■ Shown in Black leather



9413AGL
■ Shown in Gray Fabric

EXECUTIVE POSTURE CHAIR

- Waterfall seat design.
- 2½" ratchet back height adjustment for optimal lumbar location.
- Multi-Function – Three levers to modify angle of back relative to the seat, control tilt and forward tilt for keyboard intensive activities. Tilt options are free float or locking within a fixed range.
- Available in Gray or Black fabric.
- T-shaped arms are height adjustable and have comfortable impact resistant urethane armrests.
- Coccyx cutout suspends tailbone to reduce pressure on the spine.



9414AG

CONTOURED SUPPORT CHAIR

- Contoured back and tractor style seat to help eliminate fatigue.
- 2½" ratchet back height adjustment for optimal lumbar location.
- Multi-Function – Three levers to modify angle of back relative to the seat, control tilt and forward tilt for keyboard intensive activities. Tilt options are free float or locking within a fixed range.
- Available in Gray or Black fabric.
- T-shaped arms are height adjustable and have comfortable impact resistant urethane armrests.
- Coccyx cutout suspends tailbone to reduce pressure on the spine.



Black Fabric



Gray Fabric



4019AG

MERCADO™ WOOD GUEST SERIES

- Stylish guest seating for reception areas and private offices.
- Solid wood construction.
- Wood finishes match Mayline finishes.
- Leather or fabric options on seated surfaces.
- Fully assembled frames.
- Shipped 2/carton except VSC9 and VSC13 (1/carton).



VSCA



VSC2A



VSC3A



VSC5A



VSC7A



VSC9



VSC12



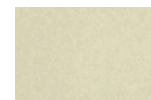
VSC13

MERCADO™ WOOD SEATING FINISH - LEATHER SEAT

	Black/Black Leather	Sierra Cherry/Black Leather	Mahogany/Black Leather	Bourbon Cherry/Black Leather	Espresso/Black Leather	Espresso/Cream Leather	Medium Cherry/Black Leather	Maple/Black Leather
VSCA	●	●	●	—	—	—	●	●
VSC2A	—	●	●	—	●	—	—	—
VSC3A	—	—	—	●	●	—	●	●
VSC5A	●	●	●	●	—	●	—	—
VSC7A	—	●	●	—	—	●	—	—
VSC9	●	●	●	—	—	—	—	—
VSC10A	●	●	●	—	—	—	—	—
VSC11A	●	●	●	—	—	—	—	—
VSC12A	●	●	●	—	—	—	—	—
VSC13	●	●	●	—	—	—	—	—



Black Leather



Cream Leather
(VSC5A & VSC7A only)

Wood Finishes:



Black



Sierra Cherry



Mahogany



Bourbon Cherry



Espresso



Medium Cherry



Maple



VSC10AF



VSC11AF

Wood Finishes:



Black



Sierra Cherry



Mahogany

MERCADO™ WOOD SEATING FINISH - UPHOLSTERED SEAT

	Black/Upholstered	Sierra Cherry/Upholstered	Mahogany/Upholstered	Bourbon Cherry/Upholstered	Espresso/Upholstered	Espresso/Upholstered	Medium Cherry/Upholstered	Maple/Upholstered
VSC10AF	●	●	●	—	—	—	—	—
VSC11AF	●	●	●	—	—	—	—	—

150+ Momentum® fabric options.

See page 27

COSY SOCIAL SEATING



Building relationships and rapport.

The COSY Social Chair excels at every turn, creating a highly engaging and energizing workplace. From reception, hospitality, private office, or small collaborative zones, COSY is ideally flexible, high in comfort and aesthetically pleasing.



Plastic Shell Colors



Black



White

Fabric Selections for Cushions



Dark Red



Lime Green



Orange



Royal Blue



White



Black

COSY SOCIAL CHAIR

- White or Black shell.
- Swivel-return cylinder allows chair to return to the fixed position when not in use.
- 4-prong base with glides.
- 5-star polished Aluminum height-adjustable base with casters.
- 6 fabric color choices available.
- 250 lb. weight capacity.

HOSPITALITY SEATING

Bistro Series Tables in Anthracite with Escalate chairs and stools in Black or White.

VALORÉ® SERIES

Social chairs for social spaces.

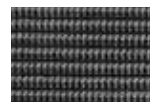
Designed to complement our Bistro line of hospitality tables, Escalate and Bistro chairs and stools are perfectly sized for dining or bar height. They are also easy to clean and maintain.

BISTRO SEATING

- Comfortable mesh back.
- Black fabric cushions.
- Tubular steel frame in Silver.
- Integrated foot glides.
- Chairs stack up to 4 high.



Black Fabric



Black Mesh



Orange Mesh



Burgundy Mesh



TSC2 Chair



TSS2 Stool

ESCALATE SERIES

ESCALATE STOOLS AND CHAIRS

- Sturdy Chrome legs/base.
- Options Include:
 - Black or White polypropylene surfaces.
 - Black plastic back and Black fabric seat.
 - Black mesh back and Black plastic seat.
 - Black mesh back and Black fabric seat.
- Optional chair trolley eases transport and storage.
- Chairs stack 25 high.
- Stools stack 8 high.



EST
■ Chair Trolley



ESC2



ESS2



ESS25



EMC2



EMS25

ESCALATE UPHOLSTERED STOOLS AND CHAIRS

- Chrome legs.
- Options Include:
 - Black plastic back and upholstered seat.
 - Black mesh back and upholstered seat.
- Optional chair trolley eases transport and storage.



EMC25F



ESS25F

150+
Momentum®
fabric options.

See page 27

MULTI-PURPOSE STOOLS

6005AG SWIVEL TECH STOOL

Versatile mobile stool for robust technical applications. Perfect companion to TechWorks® benching systems, height-adjustable tables, or drafting workstations.

- 9½" of pneumatic seat height adjustment.
- Comfortable molded Black polyurethane seat
- 5-star base.
- Chrome foot ring with twist and lock height adjustment.
- Backless design for mobility.
- Durable and easy to clean seat.
- Optional locking casters.



Black Poly



4005AG SWIVEL TASK STOOL

The perfect stool for standard tasks with lumbar support designed for customized adjustment.

- Swivel seat with pneumatic height adjustment.
- 5-star base with dual hooded casters.
- Twist-and-lock, height-adjustable foot ring.
- Back height and seat depth adjustment.
- Durable acrylic/poly blend in Black or Gray.



Black



Gray



12ADJARM

Optional T-shaped arms are height-adjustable and have comfortable, impact-resistant urethane arm rests.

KSX1 THESIS™ STOOL

The clean design of the Thesis Stool makes it the perfect match for height-adjustable tables or our TechWorks benching systems.

- Black flexible poly backrest for seated comfort and gentle recline with contoured lumbar support.
- Polished Aluminum 5-Star base with all-purpose soft casters.
- Chrome foot ring with twist-and-lock height adjustment.
- Adjustable seat height for application flexibility.



Black Poly



PRESTIGE SERIES LOUNGE

Prestige Sofa, Settee and Chairs with Cohere™ Occasional Table in Pewter with Warm Gray edge and Silver base.

CLEAN MODERN LINES

Visually and dimensionally compatible with a wide range of Mayline occasional tables and the perfect complement to our reception stations. The lush looks and plush comfort of Prestige Series Lounge Furniture is well suited for any space.



VCL3 Sofa
(Shown with optional foot kit in Mahogany)



VCL2 Settee



VCL1 Chair

PRESTIGE SERIES

- All seating surfaces in Black leather upholstery.
- Solid hardwood Black feet (standard).
- Optional foot kit colors available.



Black Leather



Black (standard)
Foot Kit

Optional Foot Kit Colors:



Sierra Cherry



Mahogany



Silver

SANTA CRUZ® SERIES LOUNGE



Santa Cruz® Chair, Settee and Sofa shown in White Leather accompanied by Sterling Coffee, Sofa and End Tables in Textured Mocha.

Comfort never looked so good.

The Santa Cruz® lounge collection is a stunning statement in style and always reliable comfort, creating a welcome environment. The line boasts genuine leather in three choices on all seated surfaces and contoured arms for exceptional comfort.

SANTA CRUZ LOUNGE

- Contoured arms for exceptional comfort.
- Genuine leather on all seated surfaces.
- Standard with Black feet.
- Optional Foot kits available for VCC1, VCC2 and VCC3 in finishes shown.
- Perfect complement to Mayline casegood lines.



Optional Foot Kit Wood finishes.



VCC1 Chair
(Shown with optional Mahogany Feet)



VCC2 Settee



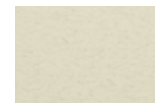
VCC3 Sofa
(Shown with optional Mahogany Feet)



Santa Cruz Mobile Lounge Chair in Almond leather (shown with tablet arm).



Black Leather



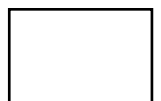
Almond Leather



White Leather



Black Tablet Surface



White Tablet Surface

SANTA CRUZ MOBILE LOUNGE CHAIRS

- Heavy-duty Black double-wheel casters in front and Black wood feet in back.
- Brushed Aluminum handle on back allows for easy transport.
- Genuine leather on all seated surfaces.
- Optional 360° swivel tablet (tablet height 27").
- Black and Almond chairs come with Black tablet, White Option comes with White tablet.
- Storage ottoman has four casters and reversible lid with Black interior.



Mobile Chair Handle Detail



VCCM Mobile Lounge Chair



VCCMT Mobile Lounge Chair with Tablet



VCC Storage Ottoman

e5™ BANCA BENCH (SOFT SEATING)



e5™ Banca Bench/Soft Seating in Raven: Shown with (3) 24" Corner Tables, (2) 48" Open Storage Bases with 1-piece Seat/Back Cushion unit in Kindle White and (2) 48" Open Storage Bases with table top. COSY chairs with a Black plastic shell and White cushion.

Collaboration Made Easy.

Transform any work setting into a collaborative space to share ideas, relax or socialize by incorporating e5™ Banca soft seating. Combine Banca within e5 workstations or private offices, or incorporate with e5 storage elements to create attractive and functional areas. Add an additional seat within a shared workstation or design a full social seating space to support larger groups and media. Use as an alternative to side chairs for additional seating within a work area - private or shared. Can form "booth" type environments for quick touch-down meetings or social activities incorporating Cohere™ tables and other Mayline products. The possibilities are endless.

e5 BANCA BENCH (SOFT SEATING)

- Modular pieces in various sizes can be arranged in many different configurations.
- Stationary or mobile sections can be rearranged for impromptu meetings.
- Use in conjunction with e5 storage elements to design larger media or social zones.
- Soft, comfortable cushions available in 150+ Momentum fabrics.



24" Open Storage e5 Banca Base in White with 1-piece Seat/Back Cushion unit in Infinity Papaya, 48" Open Storage Banca Base with 1-piece Seat/Back Cushion unit and 42" Cohere round Occasional Table in White.



24" Open Storage e5 Banca Base in White with 1-piece Seat/Back Cushion unit in Infinity Papaya. Shown with e5 Desking Suite and Gist™ Task Plus+ chair in Filiment.

e5 BANCA

- Bases offered with e5 cabinet legs (Silver, Black and White) or casters (Black only).
- Seat bases and tables are available in six e5 TFL colors.
- Tops can be one TFL and base another (since ordered separately).
- Twin wheel unhooded casters, hard wheel 37mm diameter, made of first class polyamide.

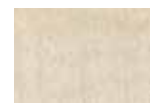
150+ Momentum® fabric options.

See page 27

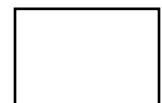
Laminate Finish Colors for Base/Table Match e5 TFL:



Cocoa
(AGX)



Summer Suede
(AGY)



White
(AGZ)



Walnut
(AHA)



Raven
(AHB)



Biltmore Cherry
(LCRM)

EVENT SEATING

Foldable, stackable, affordable - multi-purpose seating for any occasion.

Our Event Series seating adapts to multiple functions and diverse environments, from business meetings to banquet facilities to outdoor events. An ideal complement to our Event Series folding tables.



2200FC - FOLDING CHAIR

- Overlapping back protects frame from scratches.
- Non-marring polyethylene foot caps.
- Powder-coated frames match chair color.
- Finishes: Wedding White, Black, Neutral.



5000FC - HEAVY DUTY FOLDING CHAIR

- Contoured polyethylene seat and back.
- Arched cross-braces on the legs for exceptional stability.
- Gray Hammer-Coat frame.
- Finish: Textured White.

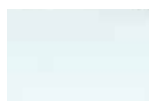


2300SC - STACK CHAIR

- 16-gauge $\frac{5}{8}$ " round high-strength steel tubing.
- Extra wide seat in a lightweight design.
- Black powder-coated frames.
- Finishes: Black, Blue.



Wedding White



Textured White



Black



Neutral



Blue



Gray Hammer-Coat Frame

MAYLINE®

GRADED-IN FABRIC PROGRAM



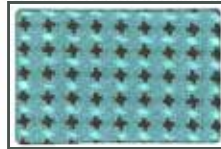
ORIGIN GAIA (OGA)



SAPPHIRE (OSP)



GARNET (OGR)



EXPO OASIS (EOA)



LATTE (ELT)



ZEST (EZT)



STEEL (OST)



JET (OJT)



EXPO SKY (ESK)



SPROUT (EST)



TUXEDO (ETX)



KNACK CARBON (KCB)
GRADE 4



FILAMENT (KFL)



DARK ROAST (KDR)



FUSE PRISTINE (FPS)



PIMENTO (FPM)



LUNAR (FLN)



AZUREAN (FAZ)



PEPPER (FPP)



INSIGHT WASABI (IWS)



SUMMIT (ISM)



PERIWINKLE (IPW)



CANTER STORM (CSR)



SAFARI (CSF)



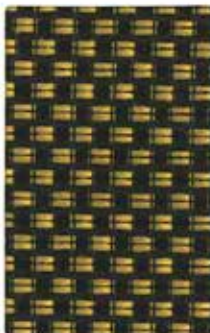
ONYX (COX)



REAL RED (IRR)



EBONY (IBY)



PERK WALNUT (PWL)



SESAME (PSM)



PEWTER (PPW)



INFINITY CAPRI (ICA)
GRADE 3



PEWTER (IPT)



RINSE (IRS)



CEDAR (PCD)



FLINT (PFT)



PAPAYA (IPP)



TYRIAN (ITY)

 - QUICK SHIP

MOMENTUM
TEXTILES

Visit www.themomgroup.com/mfg/208
for a complete Mayline® textile offering.



CORPORATE LOCATION

MAYLINE
619 N. COMMERCE STREET
PO BOX 728
SHEBOYGAN, WI 53082-0728
CUSTOMER SERVICE 800-822-8037
920-457-7388 (FAX)
customerservice@mayline.com

TO PLACE ORDERS:

MAYLINE
ATTN: ORDER DESK
PO BOX 728
SHEBOYGAN, WI 53082-0728
800-822-8037
920-457-7388 (FAX)
orderdesk@mayline.com

DISTRIBUTION CENTER

ARKANSAS
824 NORTH PALM STREET
NORTH LITTLE ROCK, AR 72114
800-480-3123

SHOWROOM LOCATIONS

CHICAGO
MERCHANDISE MART, SUITE 1147
CHICAGO, IL 60654
847-952-1213

SHEBOYGAN
619 N. COMMERCE STREET
SHEBOYGAN, WI 53082-0728
800-822-8037