



Office Furniture Catalog
www.gen2office.com



in·ge·nu·i·ty

noun

noun: **ingenuity**

the quality of being clever, original, and inventive.

National Office, the manufacturer of **gen²** Office Furniture is celebrating 50 years of innovation, insight, and ingenuity. Founded in 1967 as an on-site painting company, National Office has grown and changed into a full service office furniture manufacturer. We contribute our success to quality products, exceptional customer service and listening to our customers. We understand that every customer has unique needs and we are pleased to offer our clients options based on those individual needs.

Don't see what you need? Just ask! Our customer's questions and suggestions inspire our engineers with unique products and solutions all of the time!

gen² Select - Quick Ship Program

Value Driven Pricing & Quick Availability

Need it fast? National Office is pleased to offer our **gen²** Select Program.

We have select colors, that are always in stock!

You can apply our **gen²** Select finishes to reduce the already low cost of **gen²** Work, Avenir and 9000 products. With over 500 color combinations to choose from, we are sure to have what you are looking for.

Open the back cover for color samples of all available **gen²** Select Finishes.



Contents

| | | |
|--|---|----|
| gen² Work | - | 4 |
| gen² Wall | - | 8 |
| gen² Door | - | 10 |
| gen² Mark | - | 11 |
| gen² Avenir | - | 12 |
| gen² 9000 | - | 13 |
| gen² Desk | - | 14 |
| gen² Bench | - | 16 |
| gen² Stackers | - | 18 |
| gen² Privacy Screens | - | 19 |
| gen² Tables | - | 20 |
| gen² UP | - | 22 |
| gen² Storage | - | 24 |
| gen² Works Tools | - | 28 |
| gen² Seating | - | 31 |
| gen² Select | - | 32 |
| Warranty and Sustainability Statement | - | 33 |



What is gen² Office Furniture?

gen² is the “next generation in office furniture”.

gen² Office Furniture is designed to compete with all major furniture lines and offer compatibility with similar furniture lines from Steelcase. Customers love our variety, quality, value, and exceptional customer service.

Why choose gen² Office Furniture?

Why? Because our **gen²** furniture combines the best features of classic, high end office furniture but enhanced with features for flexibility and technology for our modern world... and all at a price your accountant will love.



**Check out our online digital library or
Contact us to find out more!**

National Office
15655 Brookpark Road
Cleveland, Ohio 44142
Phone: 216.898.0080
Fax: 216-898-8388
www.gen2office.com
info@gen2office.com

gen² Work

Our most popular line of modular furnishings



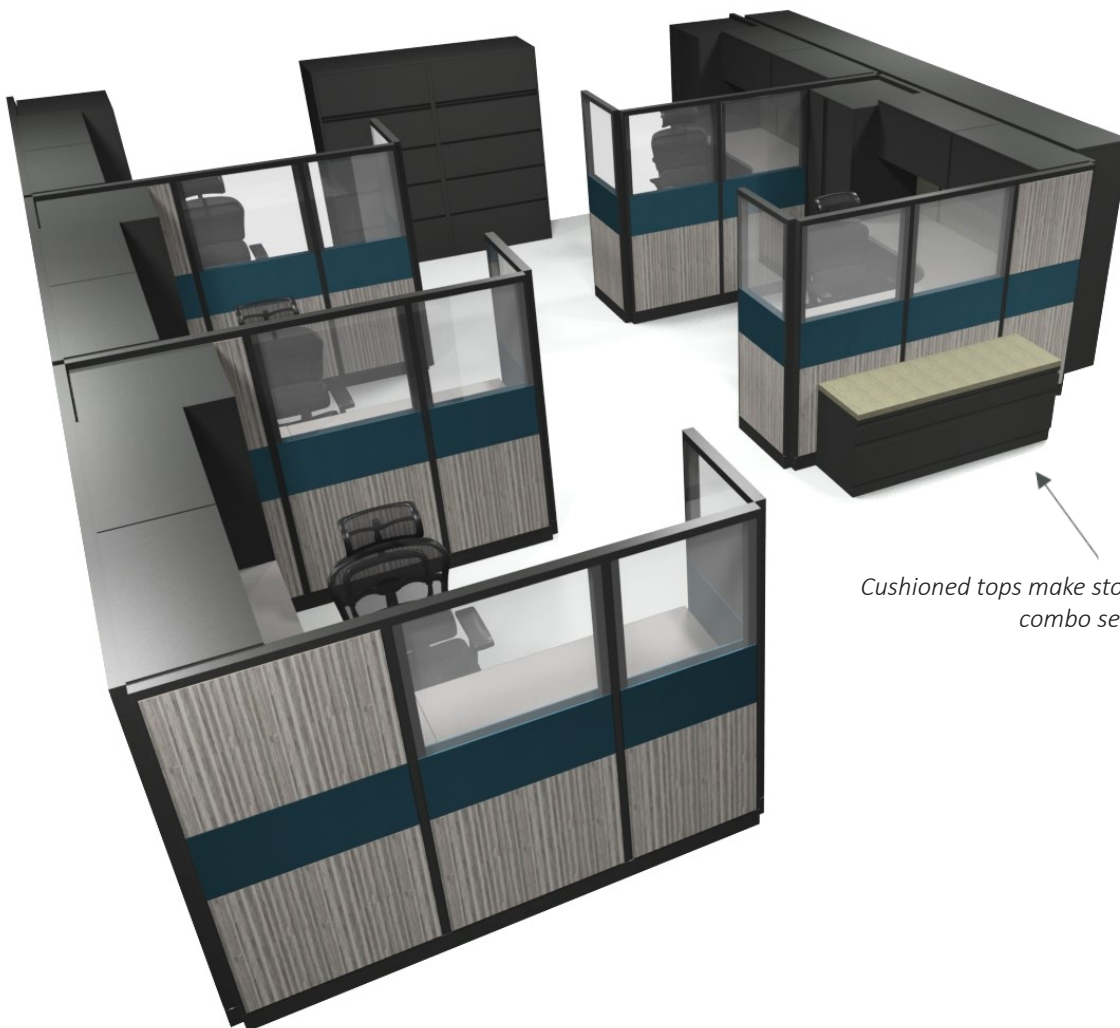
Finishes shown:

Panels - Laminate: Silver Oak Ply, Fabric: Open House 2335-2691 Waterfall

Cushion top: Quattro 300-013 Olive

Paint: Midnight Textured

Worksurfaces: Organic Cotton



*Cushioned tops make storage into convenient
combo seating.*



Finishes shown:
Panels - Fabric: Open House 2335-2082 Sunshine, Fabric: Shoreline 3024-021 Walnut
Paint: Midnight Textured
Worksurfaces: Light Oak Ply



gen2 Work offers the flexibility and value that every office needs.

gen² Work

gen² Work can construct furniture for any configuration including open plans, private offices, reception areas, and more. gen² Work incorporates all of our gen² products, and allows each client maximum customization of their workspace.

gen² Work features our Segmented Avenir Panels. Customize your panels with glass, fabric, laminate, markerboard, painted magnetic metal or an array of decorative materials. Virtually any look can be achieved, just ask us!

Segmented panels shipped pre-configured for quick and easy installation.



Finishes shown:

Panels - Laminate: Fifth Elm, Fabric: Open House 2334-2087 Green Apple, Century 7179 Fossil

Paint: Black Textured

Worksurfaces: Park Elm

Product features and options:

- 🌿 Panels: 2" thick.
- 🌿 Tasklight: standard 20" LED dimmable.
- 🌿 Overhead Storage: gen² bins and shelves.
- 🌿 Worksurfaces: 1-1/4" thick with 3mm edge.
- 🌿 Pedestals: 9000 J-pull with FR lock core.
- 🌿 Electrical: 5-wire/3-circuit or 8-wire/4-circuit.
- 🌿 Glass Options: Glass is available in all panel configurations.
- 🌿 Metal Option: Painted magnetic skin available in all panel configurations
- 🌿 Panels ship fully assembled.

Panel Dimensions:

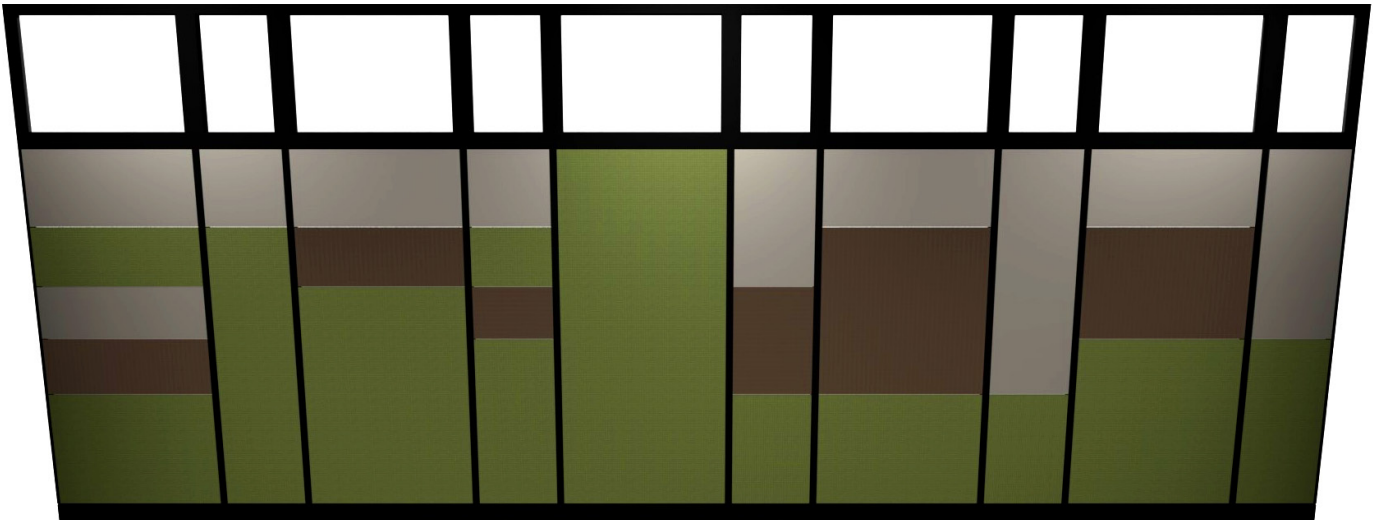
33h x 18w, 24w, 30w, 36w, 42w, 48w
42h x 18w, 24w, 30w, 36w, 42w, 48w
53h x 18w, 24w, 30w, 36w, 42w, 48w
65h x 18w, 24w, 30w, 36w, 42w, 48w
80h x 18w, 24w, 30w, 36w, 42w, 48w





| | | | | | | | | | |
|--------|-----------|----------|---------|------------|---------|----------|-----------|---------|----------|
| | | | | | | | | | |
| Skin 5 | Skin 5 | Skin 5 | Skin 5 | | | Skin 5 | | Skin 5 | |
| Skin 4 | | Skin 4 | Skin 4 | | Skin 45 | | | Skin 34 | Skin 345 |
| Skin 3 | | | Skin 3 | | Skin 23 | Skin 234 | Skin 2345 | | |
| Skin 2 | | | | | | | | | |
| Skin 1 | Skin 1234 | Skin 123 | Skin 12 | Skin 12345 | Skin 1 | Skin 1 | Skin 1 | Skin 12 | Skin 12 |

gen2 Wall
gen2 Work Segmented Panel System
Floor to ceiling panel system



gen² Wall

Constructing permanent and costly dry walls is no longer necessary. gen² Wall is an affordable and flexible solution for movable, demountable, floor-to-ceiling panels system. gen² Wall can connect to suspended ceilings, or can free stand in open ceiling designs.

gen² Wall incorporates gen² Work panels, so a multitude of finishes and skins are available—tempered glass, laminate, fabric, frosted plexi, painted metal, and glass markerboard. Business changes too quickly to rely on inflexible interiors. Organizations grow, technology expands, and new demands arise, ever transforming your workspace requirements. gen² Wall comes in two options, floor to ceiling or freestanding.

*Finishes shown:
Laminate: Wild Cherry
Paint: Fieldstone Textured*



Product features and options:

- Maximum height: Suspended ceiling- 120" , Free standing- 108"
- Clearstory—clear tempered glass
- Frame thickness: 2"
- Electrical
- 3 circuit/5 wire or 4 circuit/8 wire
- STC rating of 35 to 40- dependent on gen² Wall configuration



gen² Door

Add privacy and security to your gen2 Wall office or workstation



Panel Door available in an array of laminate options.

New in 2017
Glass option.



Product features and options:

- 🌿 Glass: 1/8" thick clear or grey tempered glass, or frosted acrylic
- 🌿 Stainless steel track and threshold
- 🌿 Width: 36"w or 42"w opening
- 🌿 Accommodates all gen2 panels—Work, Avenir, and 9000, in all heights.

Featuring
gen2 Double Sliding Door



Finishes shown:
Panels - Fabric: Anchorage 2035 Angora,
Anchorage 2044 Mulberry
Paint: Midnight Textured
Worksurfaces: Ebony Char



gen² Mark



We didn't invent the markerboard, but we are coming up with exciting new ways to use them every day!

Markerboards have been gaining considerable popularity in recent years due to their fun and functional capabilities. Markerboards are being specified on everything from full size panels, segmented panels and even full size desks and table tops! Use these tools for organization, collaboration and presentations.

Our beautiful glass markerboards are available in classic white as well as other custom colors. Our glass markerboards are very thin and sleek, and are available in an array of sizes so they can be used virtually anywhere. Glass cleans perfectly with wet or dry cleaners and is a great solution for anywhere you want a functional place to share information with coworkers or clients.

Painted markerboard glass available in an array of colors.



White Tempered



Black Tempered



Grey Tempered



Red Tempered



Blue Tempered



Green Tempered

gen² Avenir

gen² Avenir mimics the classic Steelcase Avenir furniture line but has been enhanced with more options for maximum customization. Our gen² Avenir has the same steel construction of the original and we are able to offer matching finishes at prices far below the original sell price.



Finishes shown:

Fabric: Strata 2968-050 Sky

Paint: Grey Value 1

Worksurfaces: Absolute Acajou

Since gen² Avenir is compatible with Steelcase Avenir, we are able to provide products with matching finishes at prices far below the original sell price.

Product features and options:

- 🌿 Panels: 2" thick, fabric covered, tackable and acoustic
Heights- 33"h, 42"h, 53"h, 65"h, 80"h
Widths – 18"w, 24"w, 30"w, 36"w, 42"w, 48"w, 60"w
- 🌿 Electrical: 5-wire/3-circuit or 8-wire/4-vcircuit
- 🌿 Overhead Storage
Integral door (BSBL) with FR lock in door
Flush door (MBBL) with FR lock in shelf pan
- 🌿 Tasklight: standard LED 20" dimmable
- 🌿 Worksurfaces Options:
3mm front, 1-1/4" thick
Waterfall t-mold, 1-1/2" thick
90 degree postform, 1-1/2" thick
Benchmark 90 degree postform, 1-1/4" thick
- 🌿 Pedestal options – BBF and FF 17-1/2"d, 22"d, and 28"d
9000 style J-pull front with FR lock
Avenir style front with FR lock

Add gen² Avenir Stackers to existing panels to create privacy without the expense of new furniture or disruption of reconfiguration.

See page 18 for gen² Stackers



Featuring our Integrated Panel System

Avenir style front with FR lock

gen² Select Finishes shown:
Fabric: Century 7180 Atlantic
Paint: Grey Value 1
Worksurfaces: Absolute Acajou



gen² Conventional 9000

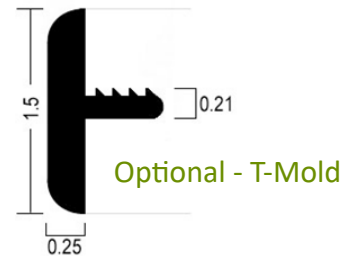
gen² Conventional 9000 may be the most durable and long lasting furniture product ever manufactured. It should come as no surprise that there are countless loyal customers even after Steelcase has halted production.

gen² is happy to be able to provide existing 9000 customers with a product that they have come to depend on. Our Conventional 9000 worksurfaces may be recycled but that doesn't mean that you can't expect the high quality product that you have come to know with gen². We completely remove the existing laminate which leaves clean metal on which to apply your chosen laminate from our extensive finish library. The central lock core is left exposed and the worksurface is as good as new.

gen² Conventional 9000 is the most sustainable line that we carry. Worksurfaces, supports and storage options are all original Steelcase pieces that have passed our discriminating quality control checks and will carry the same warranty as our new products.

Product features and options:

- 🌱 Panels-tackable acoustic, 2-1/4" thick
- 🌱 Worksurfaces- steel core, 180 degree radius, 1-1/2" thick, central locking system or optional T-mold
- 🌱 Pedestals- hanging: BBF, FF, BF
- 🌱 Electrical- 5-wire/3-circuit or 8-wire/4-circuit
- 🌱 Panels, electrical, overhead storage and pedestals are original Steelcase
- 🌱 Tasklight: standard LED 20" dimmable



Finishes shown:
Fabric: Midway 7238 Almond
Paint: Willowbark
Worksurfaces: Manitoba Maple



gen² Desk



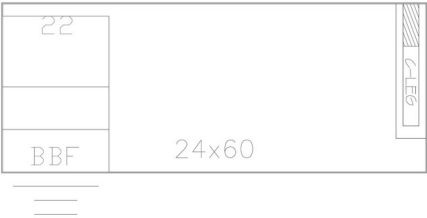
Product features and options:

- 🌿 Under worksurface storage options include lateral files, BBF pedestals, and FF pedestals
- 🌿 Overhead storage available with freestanding hutches and wall mounted storage bins.
- 🌿 With or without modesty (back panel)
- 🌿 Various worksurface size and shape options (see next page)
- 🌿 Available depths: 24" and 30"
- 🌿 Available widths: up to 72"

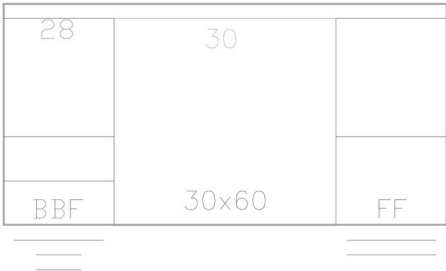
More info on our website!



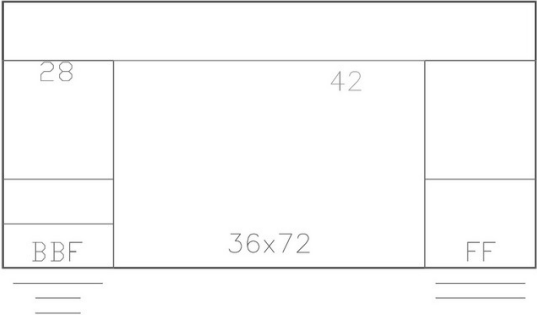
Desk layout typicals:



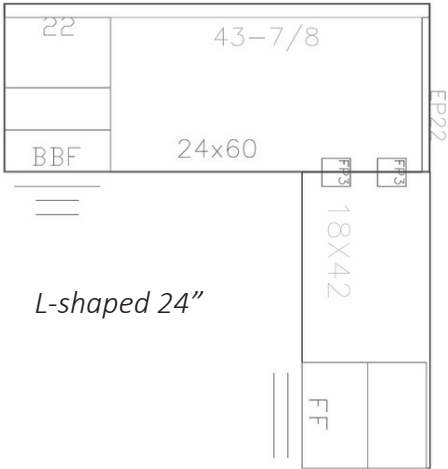
Single Pedestal



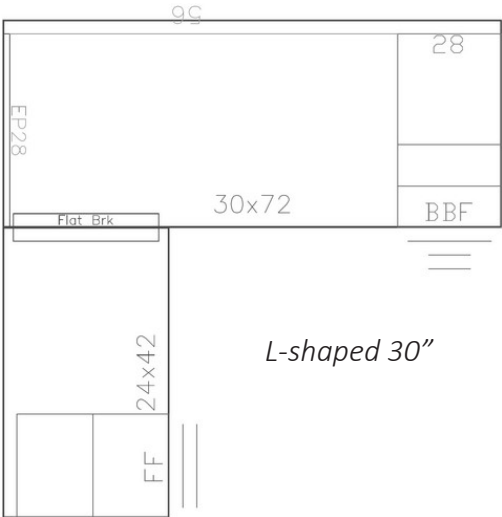
Double Pedestal



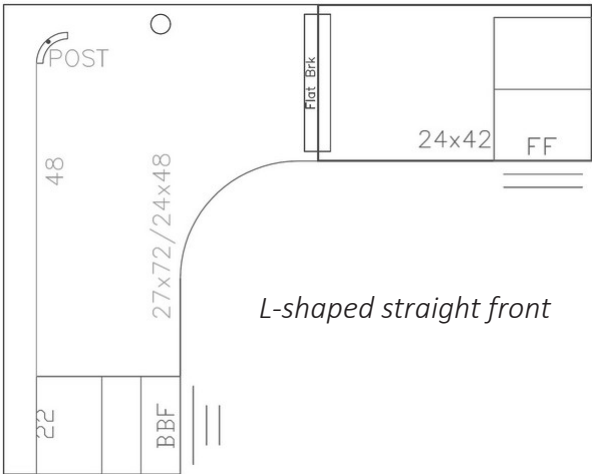
Double Pedestal with modesty



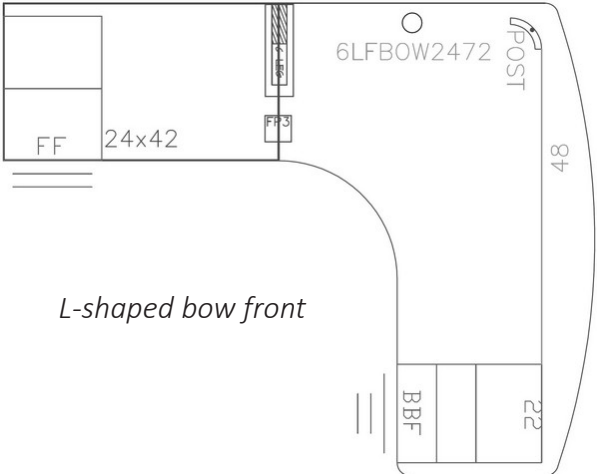
L-shaped 24"



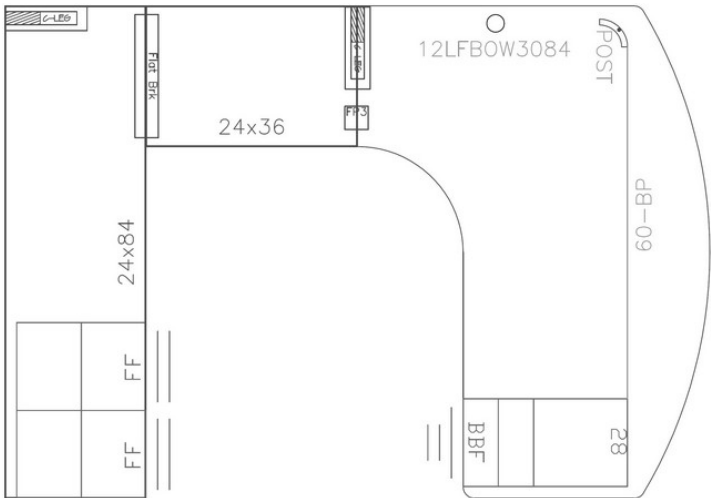
L-shaped 30"



L-shaped straight front

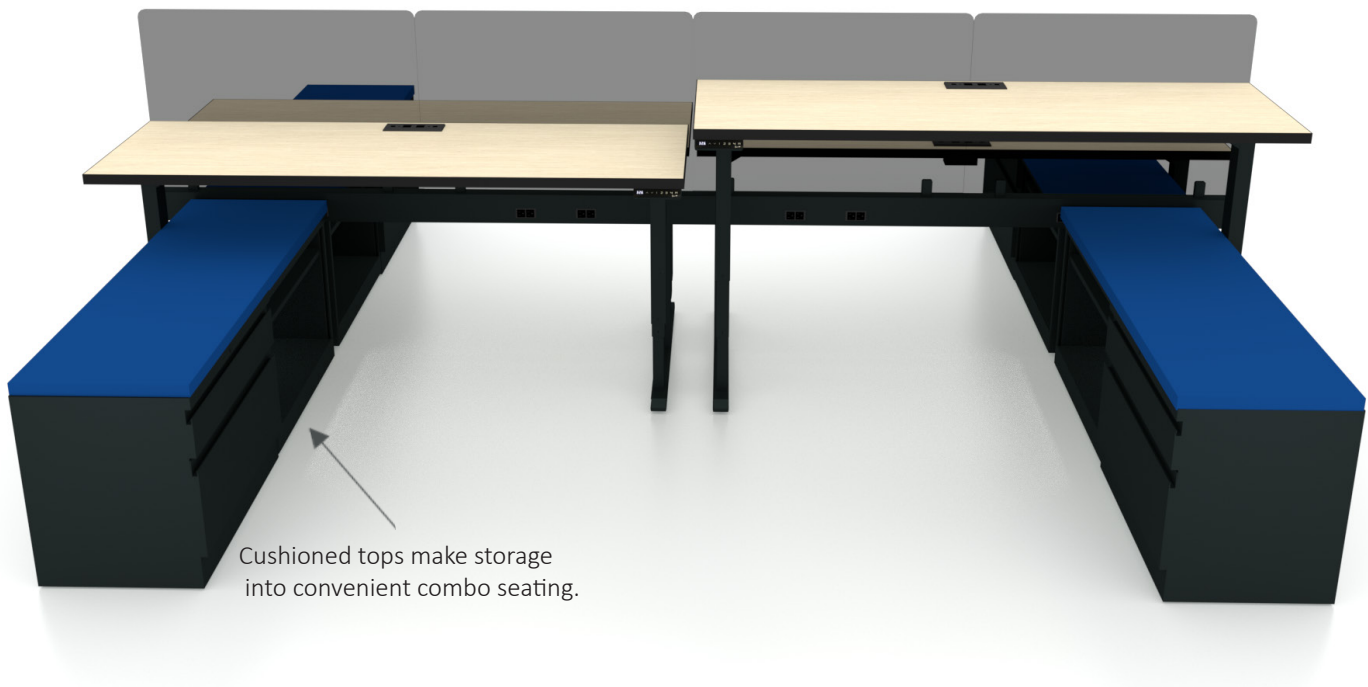


L-shaped bow front



U-shaped bow front

gen² Bench



gen² Bench is a modern and sophisticated furniture solution for any company looking for an open office plan and increased employee collaboration. Our gen² Bench consists of fixed or height adjustable tables that create several workstations in single or double rows. This configuration enables several employees to operate in close proximity while still providing each employee with the personal space required to achieve their individual tasks.

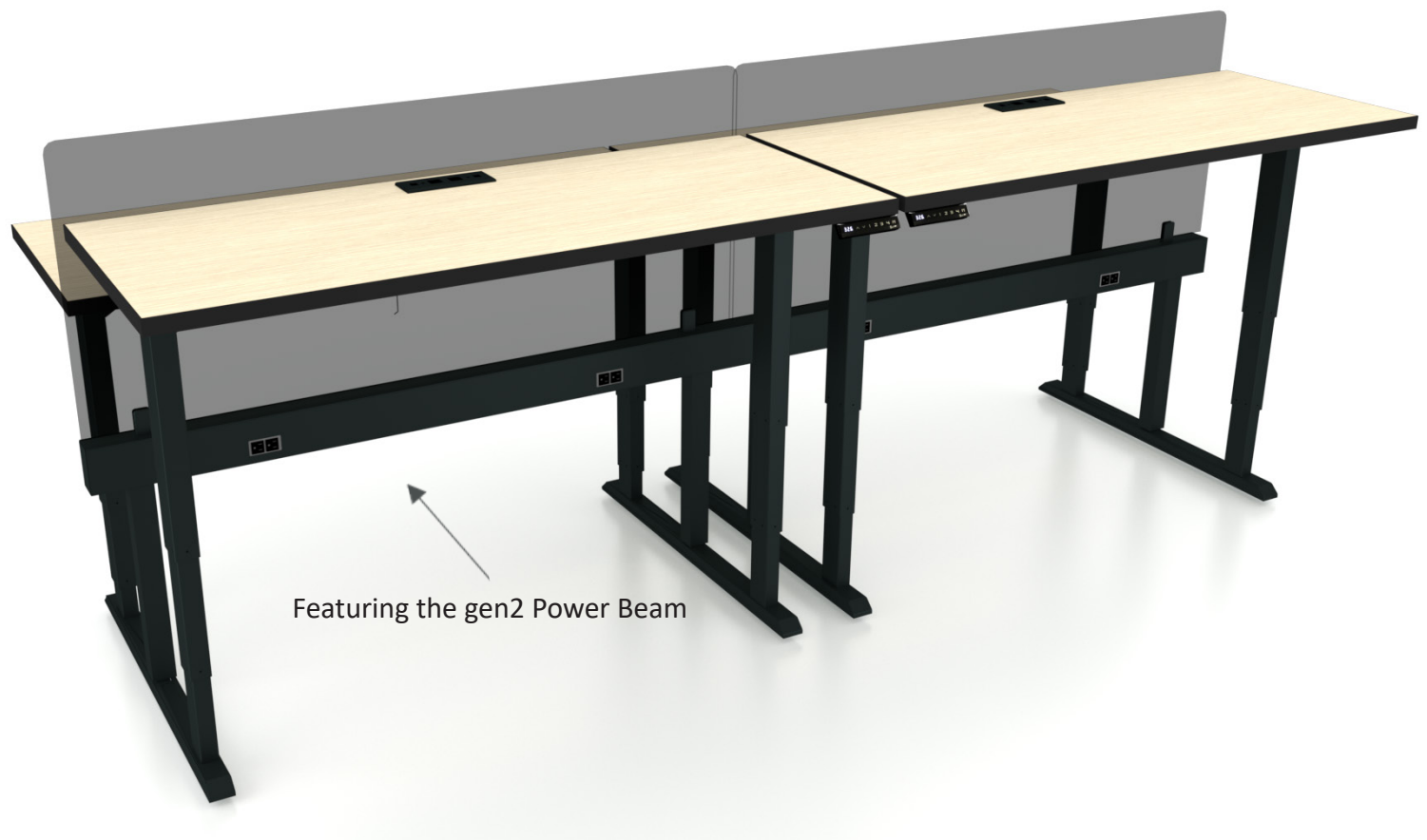
Our gen² Bench system features a raised beam for power and data. Used in conjunction with our gen² Power Hub, the gen² Power Beam provides seamless access and wire management to all users. The raised beam keeps everything off the floor and contributes to the clean, open appearance associated with benching furniture.

Product features and options:

- 🌿 Power beam distributes power and data wires to each work area.
- 🌿 Power beam uses gen² power poles or base-in-power feeds to connect benching to the building source.
- 🌿 Available widths: 48", 60", 66" and 72"
- 🌿 Available depth: up to 60"
- 🌿 Privacy screens connect to power beam or to individual worksurfaces.
- 🌿 Privacy screens available 12"h to 24"h

Another benefit of **gen2** Bench is maximizing your floor space. By concentrating employees in a single area, significant overall space savings are realized. By organizing and consolidating your workstations, **gen2** creates spacious thoroughways and modernizes the overall appearance and functionality of your office space.

Available accessories for **gen2** include fabric and glass screen partitions for privacy and division, mobile pedestals for filing and personal storage, work tools such as adjustable monitor arms and CPU holders, as well as **gen2** Work Tools accessories to customize each workspace.



Screen Options:

- 🌿 Glass: Clear Tempered , Grey Tempered, or Frosted Plexi
- 🌿 Fabric
- 🌿 Markerboard

gen² Stackers - Avenir and 9000

Increase panel heights with glass or fabric stackers

Featuring fabric stackers



*Finishes shown:
Panels - fabric: Midway 7245 Flint
Paint: Arctic White Textured
Worksurfaces: Manitoba Maple*

Product features and options:

- 1/8" thick tempered glass, frosted plexi or fabric.
- Easy install –new top cap and all hardware included in price (field install on existing product).
- Avenir Widths: 18", 24", 30", 36", 42", 48", 60"
 - 11" High Stackers (for stacking 42" to 53")
 - 12" High Stackers (for stacking 53" to 65")
 - 15" High Stackers (for stacking 65" to 80")
 - 23" High Stackers (for stacking 42" to 65")
- 9000 Widths: 20", 25", 30", 35", 36", 42", 45", 60"
 - 11" High Stackers (for stacking 42" to 53")
 - 12" High Stackers (for stacking 53" to 65")
 - 10" High Stackers (for stacking 65" to 75")
 - 23" High Stackers (for stacking 42" to 65")



*Finishes shown:
Panels - Fabric: Glade 7404 Field
Cushion top: FR 701 - Leaf
Paint: Grey Value 1
Worksurfaces: Walnut*



gen² Frameless Extenders

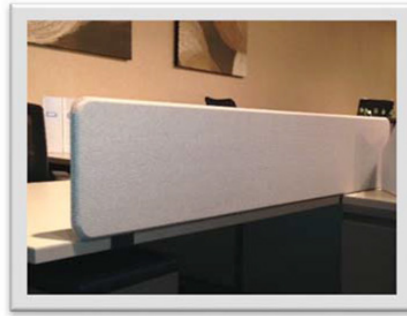
Add frameless extenders to panels and worksurfaces.

Product features and options:

- 3/8" thick tempered glass, clear and grey or frosted plexi
- Tackable fabric
 - Available Widths: 18", 24", 30", 36", 42", 48", and 60"
 - Heights: 11-1/2" and 17-1/2"
 - custom sizes available upon request*

Frameless glass and fabric extenders for workstations

Frameless extenders are easy to install—mounting brackets included in the price.



Showing clear tempered glass frameless extenders.

Also available in grey tempered, or frosted plexi.



Finishes shown:

Panels - Fabric: Foundation 7958 Stone

Cushion top: Open House 2335—2087 Green Apple

Paint: Arctic White Textured

Worksurfaces: Organic Cotton

gen² Tables



When it comes to tables, we have you covered. Whether your customer needs conference, cafeteria, private office or custom tables, we can make it.

Available options are round, square, oval, rectangular, racetrack, boat shape and tear drop, among others. Tables are 1-1/4" thick and come with 3mm edge banding on all sides.

Square

Boat Shape

Quarter Round

Round

Rectangular

Racetrack

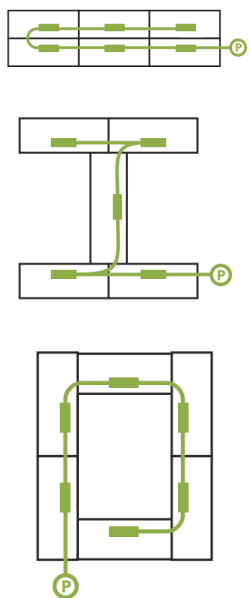
Half Round



More options available!

Premium Training Tables

Various linking possibilities



Featuring linked power grommets



Product features and options:

- Customizable starter power cord lengths: get the power where you need it
- Non-sequential: arrange and rearrange adder cords quickly and easily, in any order you want.
- Multi-directional splitters: power for everyone that goes everywhere.
- Connect up to 8 power/data modules off of one in-feed: a highly-capable and robust system.

gen² Bases

gen² supports are designed to be interchangeable as worksurface supports or table supports. gen² Up bases, fixed t-legs and other supports are all the same style for uniformity in appearance.

Folding and flip-top bases

Product features and options:

- Tubing: 2"
- Casters available



Folding base



Flip-top base
+ handle release



gen² UP

gen² Handset

gen² PowerHub

See page 29 for the perfect
gen² Accessories

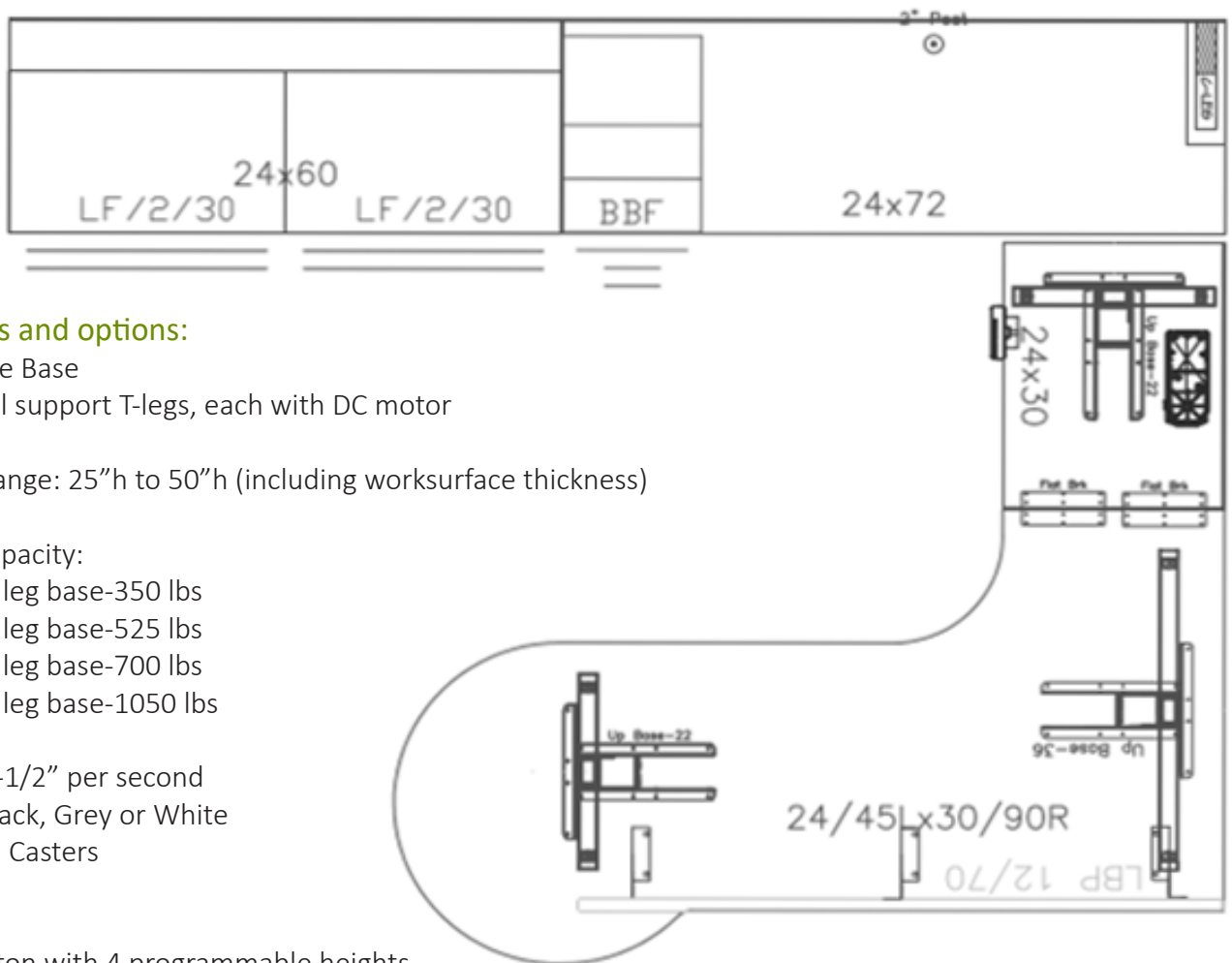
gen² UP table bases offer a simple and flexible solution to add height adjustability to any new or existing worksurface. The frameless construction of our bases allow us to uniquely configure each base to be project specific. gen² UP bases can be linked together with 2, 3, 4 or 6 bases to insure maximum strength and stability.



gen² UP 16' Conference table

Check out our YouTube Channel for a video
of this table in action.





Product features and options:

- Height Adjustable Base
Individual support T-legs, each with DC motor

Height Range: 25"h to 50"h (including worksurface thickness)

Lifting Capacity:

- 2 leg base-350 lbs
- 3 leg base-525 lbs
- 4 leg base-700 lbs
- 6 leg base-1050 lbs

Speed: 1-1/2" per second

Finish: Black, Grey or White

Optional: Casters

- gen2 Handset
Push button with 4 programmable heights

- Frameless Construction
Independent leg design allows greater flexibility supports worksurfaces and tables of all sizes.

- 5-year Warranty



gen² Storage

LATERAL FILES

- available in 2, 3, 4 and 5 high
- available in 30", 36" and 42" wide
- Standard with FR lock core



BOOKCASES

- available in 2, 3, 4 and 5 high
- available in 30", 36" and 42" wide



STORAGE CABINETS

- available in 2, 3, 4, 5 and 6 high
- available in 30", 36" and 42" wide
- Standard with FR lock core



LATERAL/BOOKCASE COMBINATION

- available in 2, and 3 drawers
- available in 30", 36" and 42" wide
- Standard with FR lock core



LATERAL/STORAGE COMBINATION

- available in 2, and 3 drawers
- available in 30", 36" and 42" wide
- Standard with FR lock core



FILE HUTCH

- available in 30", 36" and 42" wide
- depth is 12-3/4"
- one fixed shelf 12" from bottom
- one adjustable shelf



Featured on page 14



Optional - Closed Hutch

PEDESTALS

- Available in BF, BBF, or FF depending on size
- Available as mobile pedestal with casters (additional option with seat cushion)
- Available from 17" to 28"



Cushion top available for storage/seating combo

BOOKCASE TOWER (WARDROBE AS OPTION)

-Available options:

- a) 52"h is 4-high (1 adjustable shelf in bookcase) with BBF or FF
- b) 64"h is 5-high (2-adjustable shelves in bookcase) with BBF or FF

-Wardrobe includes a side to side rod (no shelves)

-Standard with FR lock core



64"h Bookcase Tower FF



52"h Bookcase Tower BBF
- with wardrobe option

STORAGE /CABINET TOWER (WARDROBE AS OPTION)

-Available options:

- a) 52"h is 4-high (1 adjustable shelf in cabinet) with BBF or FF
- b) 64"h is 5-high (2-adjustable shelves in cabinet) with BBF or FF

-Wardrobe includes a side to side rod (no shelves)

-Standard with FR lock core



64"h Storage Tower BBF

52"h Storage Tower FF
-with wardrobe option



LOCKER

- 52"h or 66"h, ranging in depth 18"-24"
- Includes one fixed shelf on top, with 12" clear height above, Side-to-side coat rod beneath shelf.
- Available in single, double and quads
- Standard with lock core



VERTICAL FILES

- Available options: 28" with 2 drawers, 40"h with 3 drawers, 52"h with 4 drawers or 64"h with 5 drawers, all are 15" wide (letter width).
- Special 18" and 22" deep also available
- Standard with FR lock core





gen² Power Hub

**Standard with (2) USB 3.0 – female to female*

Keystone Options



Data/Networking
RJ45-CAT5
RJ45-CAT6



HDMI



USB 3.0

Product features and options:

- 🌿 Mounts flat above the worksurface.
- 🌿 6 Power outlets—2 above/4-below
- 🌿 108" Power cord with 15 amp overload protection.
- 🌿 Factory or field install for surfaces 1/2" to 1-1/2" thick.



No Hub



With
gen² Power Hub

gen² Monitor Arms

Single



Double



gen² CPU Holder



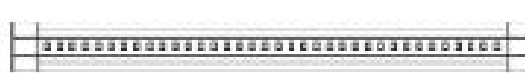
gen² LED Tasklight



Power Adapter

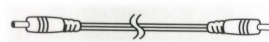
Dimmer Switch

LED Tasklight



Linking cable

LED Tasklight



Product features and options:

- 🌿 Dimmable, with touch sensitive on/off control.
- 🌿 Lights can be linked (daisy-chained).
- 🌿 Small/Light-weight.
- 🌿 Easy to install; includes magnetic and wood mounting hardware.
- 🌿 LEED points are available.
- 🌿 Affordable and energy efficient.



gen² Organize



Binder



File Sorter



Letter



Legal



Phone Holder



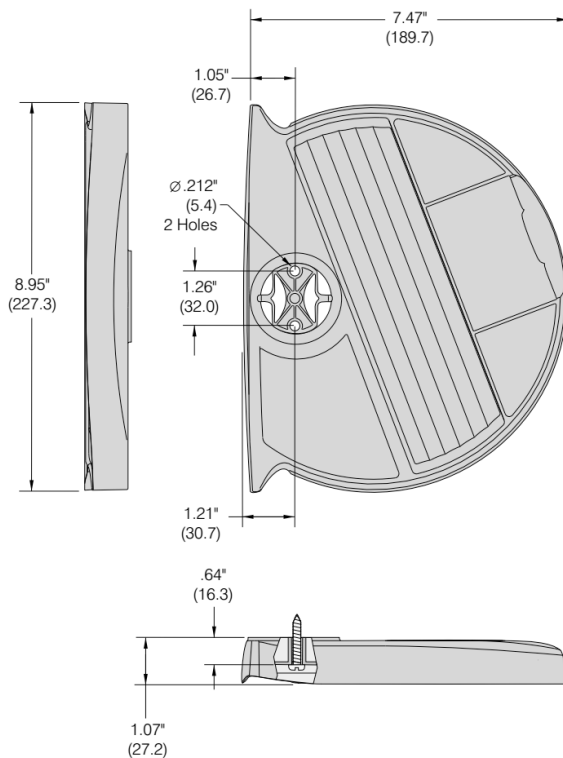
Pen Cup

gen² Swivel

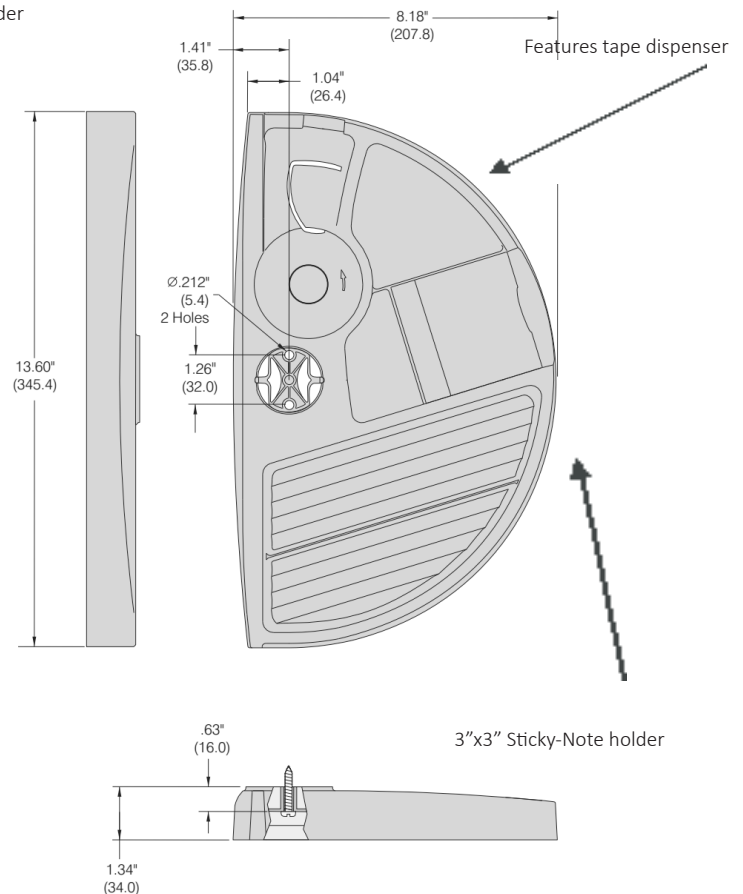
This unique center drawer alternative rotates 180 degrees with one simple push on either end.

Small

2"x3" Sticky-Note holder



Large



gen² Seating

High-back

gen-7712A



gen-710



Mid-back

gen-7717A



gen-716



Our **gen2** line of seating is high quality and value engineered for everyday use.

Guest

gen-709



Task

gen-5600



gen-T200



gen-9100-B



More options available!



gen² Select Paint



Grey Value 1
4682



Black Textured
7207



Fieldstone Textured
7238



Arctic White Textured
7241

gen² Select Fabric



Century Aspen
7176



Century Dew
7178



Century Fossil
7179



Century Atlantic
7180



Century Driftwood
7181



7183



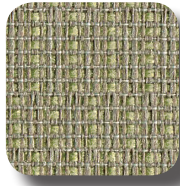
Sprite Butter
2671-020



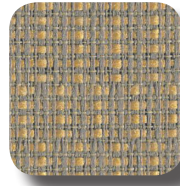
Sprite Linen
2671-010



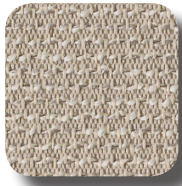
Sprite Khaki
2671-030



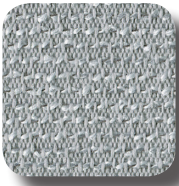
Sprite Kiwi
2671-031



Sprite Harvest
2671-032



Strata Sand
2968-030



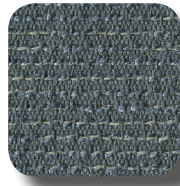
Strata Cloud
2968-040



Strata Sky
2968-050



Strata Cement
2968-060



Strata Sea
2968-070

gen² Select Laminate



Wild Cherry



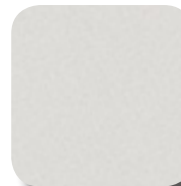
Manitoba Maple



Absolute Acajou



Designer White



Fashion Grey



White Nebula



White Tigris



Desert Zephyr



Misted Zephyr







Twilight Zephyr

gen² Warranty

National Office warrants that our gen² workstations are free from defects in design, materials and workmanship. We will repair or replace, with comparable product, any product, part or component which fails under normal use as a result of such defect. This warranty is valid for as long as the original customer owns and uses the gen² product, regardless of how many shifts each day it is used.

The following are exceptions to the above warranty:

-  Electrical components are warranted for 10 years from date of purchase. Lamps and ballasts are not warranted (fluorescent). gen² LED Tasklights are warranted for 3 years from date of purchase.
-  gen² UP bases are warranted for 5 years from date of purchase.
-  High-wear items such as fabrics rated heavy-duty, other covering materials and user-adjustable worksurface mechanisms are warranted for 5 years from date of manufacture.
-  Fabrics rated general contract are warranted for 3 years of single-shift use from date of manufacture.

This warranty does not include a customer's own material or equipment applied to our products. This warranty is void if the customer modifies the product, if attachments are made to the product or if the product is not installed or used in accordance with National Office installation and application guidelines.

This warranty is the customer's sole remedy for product defect and no other express or implied warranty is provided. National Office shall not be responsible for consequential or incidental damages arising from any product defect

gen² Sustainability Statement

gen² Work Panels may consist of post-consumer materials that would otherwise be discarded and sent to a landfill. Materials that do not meet our strict quality standards are sent to be recycled.

We do offer our customers fabric options from Terratex that are 100% recycled or bio-based materials that are completely recyclable. Customers are also able to specify Sierra Pine Arreis SDF which is formaldehyde free and made from 100% recycled wood.

National Office does offer a buyback program should your furniture needs change. Panels and other metal components may be accepted depending on the product mix, quantities and locations. After the buyback, components are either reused, recycled or sold again as "as-is" product.

National Office is very proud of the investment made in our state of the art powder coat process. Unlike liquid paint, no solvents are used and only negligible amounts of harmful VOCs are released.

Contact us for more information about our products, processes, or using our furniture in LEED projects.



For more information about our products,
please visit

www.gen2office.com

Or for personal service, call

[1-800-321-6165](tel:1-800-321-6165)