



PAIRINGS® HEALTH

Designed by pL-D

Kimball® Health



CHANGING THE WAY WE WAIT

Pairings Health was designed to address the constraints of today's waiting places and to make the waiting experience more pleasant and productive.

Made with privacy, connectivity, cleanability and comfort in mind, Pairings Health is a family of components that can be combined to create a range of tailored solutions, whether the environment calls for a simple seating group or a robust lounge system.



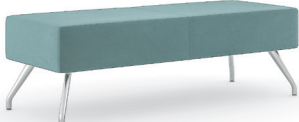
STATEMENT OF LINE

Please reference the Kimball Health price list for full statement of line and the complete offering of material options.

SEATING



One-Seat Bench
Available in 21" and 29" depths



Two-Seat Bench
Available in 21" and 29" depths



Three-Seat Bench
Available in 21" and 29" depths



One-Seat Armless Lounge
with Clean-Out



Two-Seat Armless Lounge
with Clean-Out



Three-Seat Armless Lounge
with Clean-Out



One-Seat Lounge with 2" Arm
with Clean-Out



Two-Seat Lounge with 2" Arm
with Clean-Out



Three-Seat Lounge with 2" Arm
with Clean-Out



One-Seat Lounge with 8" Arm
with Clean-Out



Two-Seat Lounge with 8" Arm
with Clean-Out



Three-Seat Lounge with 8" Arm
with Clean-Out



Corner Bench
21" x 21" and 29" x 29"



45° Crescent Bench
Available in 21" and 29" depths



45° Crescent Lounge
Available in 29" depth



90° Corner Lounge
Available in 29" depth

PRIVACY PANELS



One-Seat Right Side and Back
with Clean-Out



Two-Seat Right Side and Right Back
with Clean-Out



Three-Seat Left Side, Left Back, and Left Center
with Clean-Out



One-Seat Full Back and Sides
with Clean-Out



One-Seat Full Back and Sides with Tech Arm
with Clean-Out



Three-Seat Full Back and Sides
with Clean-Out

DIVIDER WALLS

Available in 30" and 41" heights



Freestanding
Available in 27", 54" and 81" widths



Plus Wall*



Z Wall*



90° Corner
Available in 21" and 29" depths

*Combination of In-Line and Freestanding walls, reference Kimball Health price list for more details

STATEMENT OF LINE & DETAILS

Please reference the Kimball Health price list for full statement of line and the complete offering of material options.

PERCH



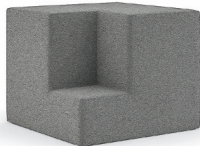
One-seat
Low Seat



Two-seat
Low Seat



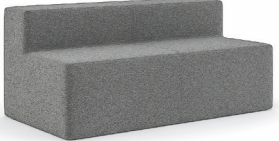
Outside Corner
Low Seat



Inside Corner
Low Seat



One-seat
Mid Seat



Two-seat
Mid Seat



Outside Corner
Mid Seat



Inside Corner
Mid Seat

TABLES



Round
21", 29" and 42"



Square
21" and 29"



Magazine
29" x 36" and 29" x 54"



Magazine with Power Module Options



Pull-Up
21"



In-Line Rectangle
Available in 21" and 29" depths

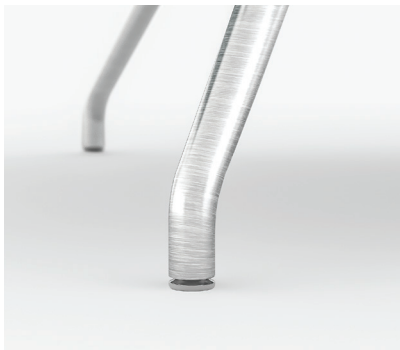


In-Line 15° Bullet
Available in 21" and 29" depths



In-Line 45° Wedge
Available in 21" and 29" depths

DETAILS



Brushed Aluminum Leg



Polished Aluminum Leg



2° Arm Cap



8° Arm Cap



Tablet Arm & Clean-Out Detail



Tech Arm



Storage Arm with Power Module Option



Arm with Power Module Option



Bench with Portable Surface, 18"D x 12"W



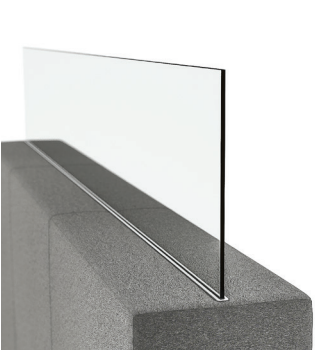
Divider Wall with Portable Surface 10"D x 12"W



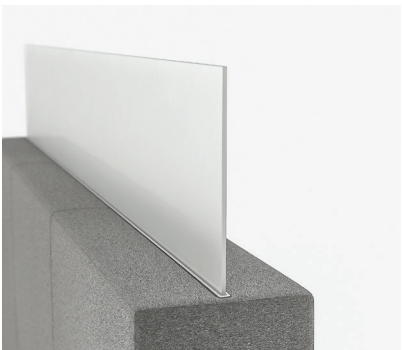
Divider Wall with Work Shelf



Divider Wall with Surface



Divider Wall with Glass Screen



Divider Wall with Resin Screen



Divider Wall with Power Option



PAIRINGS® HEALTH

Kimball® Health

800.482.1818
kimballhealth.com

1600 Royal Street
Jasper, Indiana 47549

A division of Kimball
©2017 Kimball International, Inc.
Form No. BRKHPAI ver. 17a